



the Hedgelines

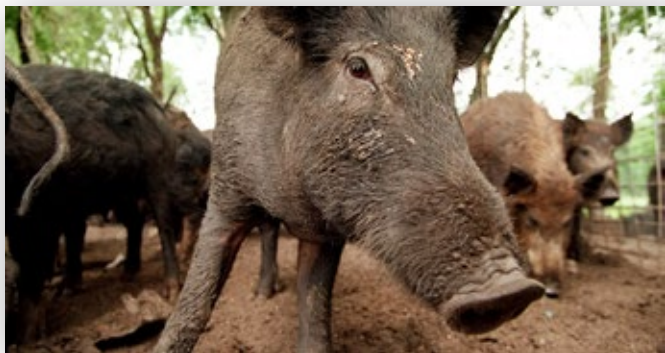
In this Issue:

The Nuisance in the Wild
Is your Lawn Gasping for Air?
Dealing with Dog Urine on your Lawn
Property Spotlight: Starkey Ranch CDD
Managing Expectations at Starkey Ranch
Strategic Planning for your Landscape

The Nuisance in the Wild

Just like invasive exotic plant control, feral hog control is integral to public conservation land stewardship in Florida. They negatively impact wetlands and other habitats by "rooting" up the soil searching for food. They prey on native wildlife, compete with native species for food and transmit diseases to other wildlife, livestock, and humans.

Wild hogs (*Sus scrofa*), also called wild pigs, wild boars or feral pigs, are not native to Florida. They were introduced to the state as early as 1539 by Spanish explorers, and today wild hogs occur in all of Florida's 67 counties across a wide variety of habitats. Wild hogs breed year-round, producing up to two litters and as many as 26 young each year. They can roam for miles and often travel in groups called "sounders," consisting of several adult females and their offspring. These traits make it extremely difficult to completely remove wild hogs from large tracts of land.



The Florida Fish and Wildlife Conservation Commission (FWC) legally defines wild pigs as wildlife but not a game species, although wild pigs are ranked the second most hunted mammal in Florida, after white-tailed deer (*Odocoileus virginianus*).

Wild hogs are omnivores that use their broad snouts to "root" for food below the soil's surface. Rooting by just a few individuals can turn over large areas of soil in just one night. When swine root, they burrow into the soil with their snouts to find roots, tubers, fungus, etc. This rooting loosens the soil, destroys native vegetation, and modifies the chemistry and nutrients of the soil. Feral swine can greatly disrupt natural ecosystems, agricultural areas, livestock pastures, and residential areas. Estimates >\$2 billion each year result from feral swine damage to agriculture in the United States.

Feral swine also carry many diseases, some of which are transmittable to wild and domestic animals as well as humans. Pseudorabies is a contagious infectious disease of swine caused by pseudorabies virus (PRV), a herpesvirus. Feral hogs are the main reservoir of PRV in the United States.

Trying to prevent wild hogs from coming onto your property can be difficult. With landowner permission, wild hogs may be trapped, shot or hunted year-round with no fees, licenses or permits required (including when using a gun and light during non-daylight hours). Private nuisance wildlife trappers offer services including trapping, removal and disposal of wild hogs.

For a contact list of Nuisance Wildlife Trappers visit the Florida Fish and Wildlife Conservation Commission website.
<https://app.myfwc.com/HGM/NWT/NWTSearch.aspx>

Is your Lawn Gaspng for Air?

When your turf's roots can't breathe, it shows. Weeds take over where grass struggles. Grass that used to be green turns brown. Pests and disease pounce. The good news? There are solutions. When your soil becomes compacted, either from age or from heavy foot traffic, your lawn can't breathe. Its roots can't take in water or nutrients, which weakens your turf and opens the door for disease and weeds. Aeration uses a machine to pull out tiny cores of soil from your lawn, allowing water and oxygen to get to the roots. Now, your lawn's roots can grow nice and deep, producing a lush, healthy carpet of green.



What is lawn aeration anyway?

With lawn aeration, small holes are made throughout the turf with aeration spikes that penetrate the soil at a minimum of 1.5 inches deep. Cores of soil are pulled and then left on top of the ground to naturally decompose, which helps relieve soil compaction.

Aeration helps your Lawn

breathe. Your commercial property's turf needs water, oxygen, and nutrients to survive and thrive. But after months of foot traffic and equipment use, the ground can become compacted and a layer of thatch can form. Aeration can help to break up that layer and loosen the soil, allowing it to breathe.

Ignore your Lawn, and it Suffers

If your lawn needs aeration and you don't do it, water won't penetrate deeply. So your lawn's roots will shrink and come to the surface, looking for water.

This weakens the root system, and it won't be able to tolerate summer's heat and drought.

As your grass dies off, weeds will fill in, and can quickly take over your entire lawn.

How Often and Best Time to Aerate your Lawn

Typically, it would be best if you aerated once in the spring and once in the fall. Even if your soil doesn't become too compacted, aeration is good to cut through any thatch buildup in your lawn.

IS TOO MUCH THATCH CHOKING YOUR LAWN?

1. Alleviates soil compaction
2. Reduces weed growth
3. Improves uptake of water & nutrients
4. Increases oxygen absorption to roots
5. Encourages new, deeper root growth
6. Enhances grass growth
7. Prevents thatch build-up
8. Improves drainage reducing water runoff and puddling
9. Helps your lawn recover from years of use



Property Spotlight: Starkey Ranch CDD

Starkey Ranch exemplifies a new model in greenfield development. The Starkey family donated a large portion of their ranch land to create a permanent wilderness preserve. Dix.Hite + Partners embraced their vision and developed a master-planned community that honors the land's history, connects people to nature, and creates a sense of place celebrating a ranching character.

Nature is one of the unique features that sets Starkey Ranch apart from other communities, and it was intentional from the start. The landscape in this 2,500-acre community utilizes a palette that is 95% native and, except turf, is entirely xeric. From responsible practices in water usage and water quality to drought-tolerant plants and steps to reduce the impact of development on the land.

Creating a sense of place, and connecting people to nature and each other.

Native plant mixes respond to their environmental factors of light, shade, and water. The open spaces throughout the community treat stormwater, provide habitats for wildlife, and offer relaxing vistas and trail views for the community. Boardwalks and pedestrian bridges float through the landscape exposing users to natural ecologies without disrupting the land.

In place of the traditional master amenity area, a series of well connected parks and open spaces serve a role in the community and provide unique experiences. The parks at Starkey Ranch compose a cohesive series of context-sensitive open spaces, honoring the land's history, connecting people to nature, and creating a sense of place. Like a ranch, each park is multi-functional and designed in response to the land. Each park tells the site's history, respects the surrounding wetlands, increases tree canopy on the former farmland, and protects habitat for native wildlife. The parks provide space for families to gather with neighbors, play with their children and pets, celebrate special events, and appreciate natural Florida. By creating multiple spaces throughout the community rather than one amenity, the system of parks at Starkey Ranch encourages these activities to take place.



Managing Expectations at Starkey Ranch



We are a team, sharing our unique talents to help those we engage, whether at work, home, or in the community. We are an encouraging and supportive team, leading by example and influence, encouraging and supportive to inspire all to maximize their potential.

Left: Starkey Team Leaders – Ana Roblero: Detail Crew Leader, Victor Alvarado: Production Manager, Anna Rabello: Detail Crew Leader Gary Hawkins: Starkey Ranch Account Manager.

Second Row Left: One of our Mow Crews working Lake Blanche Dr. Second Row Right: Our all women Detail Crew.

Third Row Left: One of our Mow Crews finishing up along Rangeland Blvd.

Bottom Left: Ana Rabello and crew working Homestead Park.

Bottom Middle: Irrigation Specialist: Ricardo Garcia.



Dealing with Dog Urine on your Lawn

What Causes Dog Urine Spots?

Dog urine contains a lot of nitrogen. While nitrogen is usually a good thing for your lawn—it is the main ingredient in most fertilizers —too much of a good thing can be bad for your grass. Concentrated nitrogen can “burn” and kill your grass. However, this nitrogen overload also helps explain the distinct appearance of dog urine burn spots.

Urine spots often start as dark green patches. That deep green color is the result of heavily fertilized grass. Eventually, especially if your dog continues to pee in the same spot, you may end up with a dead patch of grass surrounded by a dark green ring. The dead patch is where the high concentration of nitrogen has killed the grass, and the dark ring is where the urine is less concentrated and the grass is vigorously growing.

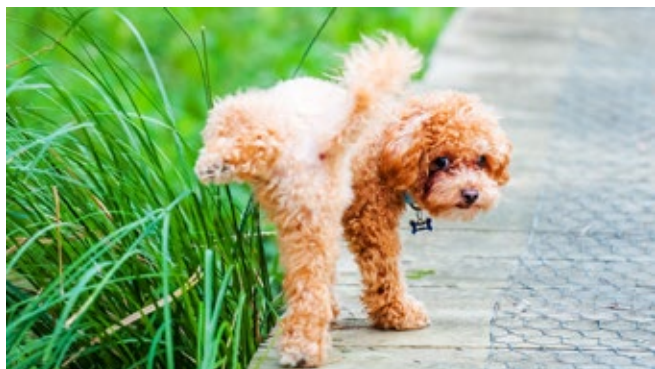
In addition to too much nitrogen, another cause of dog urine spots is the high level of salts in your dog’s urine. The salts dry out the grass, and the plant becomes so desiccated that it dies. You’ll notice yellow or brown patches of dead grass on your lawn when that happens. Even then, you may still see a green ring around the spot. That’s where the concentration of salts was lower, and the nitrogen increased growth.

There are two ways of dealing with dog urine spots. Essentially, you can either prevent or treat the spots. To prevent them, you have to change your cultural practices and your dog’s behavior. If the spots are already there, treating them is similar to recovering from any damage to your grass.



Pro Tip

Consider making a doggy potty area if you don’t want any spots to fix or water later. You can use tall grasses, mulch, or dog rocks that absorb the urine better than regular lawn grass and won’t leave any lasting brown spots.



Prevent Spots

You need to get to the root of the problem to prevent dog urine spots. The cause of the spots is an overload of nitrogen and salts from the urine. To avoid damage, you need to disperse and dilute the nitrogen and salts. Luckily, that’s not hard to do.

Flushing the area where your dog just peed will help minimize the effects of the urine, as the harmful compounds are washed away. In the most extreme sense, this might mean that you follow your dog around outside when they are doing their business.

Various products can help.



Treat Spots

If you’ve already got dead spots from dog urine, it’s too late to use prevention methods. Instead, you need to deal with the damage and repair the dead spots. For the most part, dealing with dead spots in your garden is the same, whatever the cause is.

Since the grass died from too much nitrogen and concentrated salts, it’s a good idea to flush the area with water to clear the soil.

The Bottom Line

If you have a dog, you may have to deal with urine spots on your lawn. Luckily, they are treatable. And remember, as much as you love your lawn, your dog is an important part of your family, and they won’t be around forever.

Strategic Planning for your Landscape

Innovative Irrigation

Keeping your plants healthy and preserving water is always a top priority. Today, there are many effective and smarter irrigation technologies that will help you save on your landscape budget at a lower cost and keep your plant life growing properly. These latest systems include drip irrigation systems that target water where the plants need it the most, rain sensors to help eliminate unnecessary watering, and advanced controllers that adapt to different weather conditions.



MP Rotator® nozzles apply water slowly, allowing water to be absorbed deep into the soil without wasteful runoff.



Micro irrigation products like HDL distribute water slowly and precisely at the base of the plant to achieve maximum water savings.



Weather sensors adjust irrigation according to on-site conditions. AC-powered Hunter controllers are EPA WaterSense certified with a Solar Sync® sensor or when using internet weather data.



Hydrawise® smart Wi-Fi controllers provide the exact amount of water for landscapes to thrive, with automatic adjustments based on local weather. Plus, you can manage Hydrawise from anywhere!



Rotors effectively irrigate large areas with uniform coverage and apply water at lower rates to prevent over-watering.



Valves are engineered to withstand the rigors of harsh environments and ensure a highly reliable system in every application.

Drought-Tolerant Plants

Imagine having a commercial property full of beautiful lush greenery and vibrant plant life, with half the maintenance. Many commercial properties are switching to drought-tolerant plant life to help with water conservation and lowering costs.

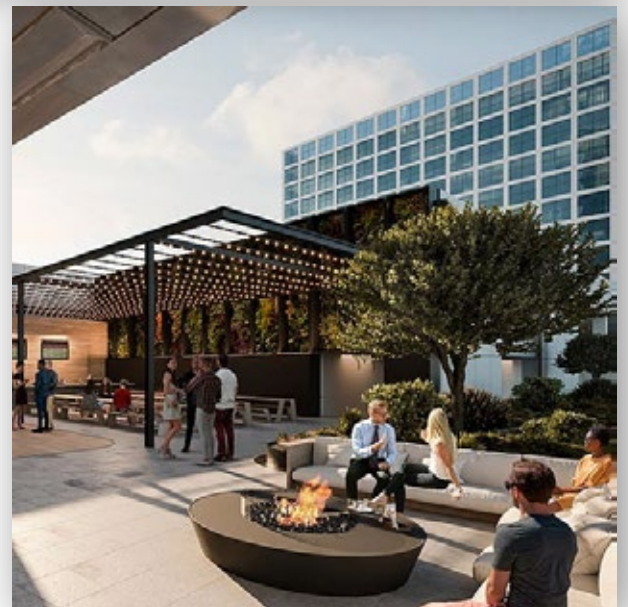


Placemaking Environments

Placemaking is a popular trend that many landscape architects are taking advantage of when it comes to designing attractive and functional commercial properties. Placemaking is all about creating an appealing space where people will want to gather. Think parks filled with fountains, sculptures, playgrounds, fire pits, living walls, comfortable seating and gorgeous plant life. Placemaking is a great way to create an enjoyable space for both retail or large office park properties.

Take Control of your Landscape

Every year you are going to see or hear about new landscaping trends but the key is to choose the features that best highlight your property and are smarter for your business.



Sarasota

(941) 556-9404

Serving: Charlotte, DeSoto, Hardee, Manatee, Sarasota

Tampa

(813) 757-6500

Serving: Hillsborough, Pasco, Pinellas, Polk

Wesley Chapel

(813) 406-4465

Serving: Citrus, Hernando, Pasco, Pinellas