



FIRST ALERT **HURRICANE GUIDE** **2017**



Sponsored by



FIRST ALERT **WEATHER**



Matthew was the fifth longest lasting major storm in history with winds exceeding 110 mph for more than seven days. Had Matthew moved just 170 miles west, it would have been devastating to the Suncoast.

The projections for the 2017 season are basically for a near average or slightly below average season. This is due to a cool down of the waters in the north and central Atlantic and the fact that we may see a weak El Nino show up near the peak of season. Typically, when El Nino (warming of East Pacific) is present, there is more shear in the Atlantic basin that inhibits tropical development. Whatever the season throws our way, being prepared and making smart decisions are the key to surviving.

We saw considerable flooding and coastal damage along the Suncoast last year due to Hurricane Hermine. As it skirted along our coast, it brought five to 10 inches of rainfall in a short time to Sarasota and Manatee counties, flooding streets and causing some evacuations. Winds gusted up to near hurricane force at times, and the storm surge was 2- to 3-feet deep causing some minor coastal flooding.

Over the years, only a few storms have had a huge impact on our coast. The hurricane known as the Cuba/Florida storm of 1944 came crashing into Sarasota as a strong Category 1 hurricane. In 1960, Hurricane Donna made landfall near Ft. Myers and moved through central

Each year, more people move to the Suncoast with little or no knowledge of what hurricane season is all about.

If you plan on staying here this summer, you need to have a plan of action. It can save your life. Florida is ranked No. 1 for impacts by hurricanes over the past 125 years. We have had 99 encounters with these storms since records began back in 1878.

Thankfully, our coast from Charlotte County northward through Manatee County has had the fewest number of visits from these devastating storms compared to the rest of the State. This is primarily due to our latitude and the fact we don't face the Atlantic Ocean where most storms come from.

We saw one of the strongest storms on record last year. Matthew moved along Florida's east coast causing nearly \$3 billion worth of damage to Florida and claiming 12 lives. It could have been much worse, but the core or strongest winds stayed just offshore.

Be prepared and watch ABC 7's **"Surviving a Hurricane"** special video presentation.



Sarasota and Manatee counties with winds well over 100 mph, causing considerable damage. And in 2004, we saw Hurricane Charley wipe out Punta Gorda and cause considerable damage to Port Charlotte, Arcadia and Wauchula as it moved across the State. So, although we are considered as one of the safest coasts here in Florida, we have been hit in the past and will be in the future. No one can say with any certainty that this will be the year, but we must prepare every year like it's going to be.

Read through this guide and develop a plan prior to the threat of a storm. Don't wait until the storm is on us. Discuss with your family what you plan on doing if a storm is expected to strike our area. Know your evacuation zone and what kind of storm it would take to force you out of your home. Get Dade County approved shuttering for your doors and windows. Have a hurricane supply kit, and continue to learn the skills necessary to survive a storm.

Better to be prepared to face this formidable opponent with a fighting chance for survival than to be ill prepared and fighting for your life. Be sure to check out our hurricane special which has many life saving tips to help you weather the season of storms.

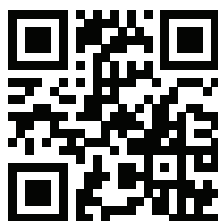
Bob Harrigan
Chief Meteorologist, ABC 7
The Official Suncoast Storm Team

FloridaDisaster.org
(Public Mapping)

<http://goo.gl/Rp1Wwp>

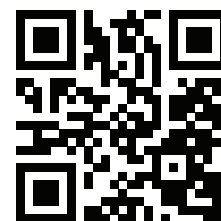


FIND YOUR EVACUATION ZONE



Sarasota County

<http://goo.gl/zIEYgL>



Manatee County

<http://goo.gl/r3vq3B>

2017

Keeping You Informed On-Air



You can count on The Official Suncoast Storm Team whenever severe weather threatens. Bringing you the most comprehensive and accurate forecast on the Suncoast

Comcast Cable
CH 7 & CH 431

Spectrum Cable (Manatee)
CH 7 & CH 625

Frontier
CH 7 & CH 507

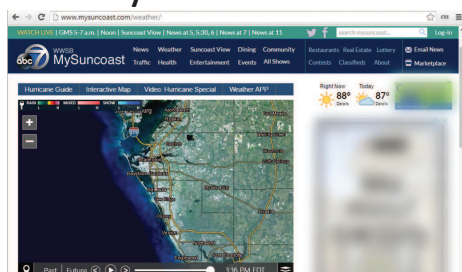
DirectTV
CH 7 & CH 40

Dish Network
CH 7

Online

Go online for *The Official Suncoast Forecast* and updated weather information and alerts when severe weather approaches.

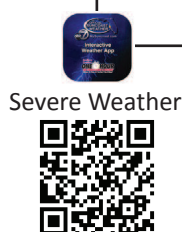
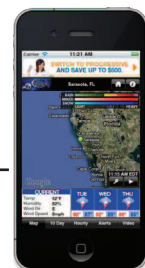
MySuncoast.com



MySuncoast.com/mobileapps/

Mobile

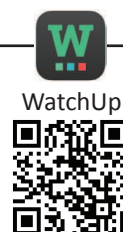
Stay informed wherever you go!
The **SuncoastWx** weather app brings you the latest weather updates no matter where you are.



Severe Weather



ABC 7 News



WatchUp

Weather & Short Wave Radio Programming

County	SAME	Transmitter(s)	Frequency MHz
Charlotte	012015	Fort Myers, Venice	162.475, 162.400
DeSoto	012027	Fort Myers, Venice	162.475, 162.400
Hardee	012049	Riverview, Venice, Sebring	162.550, 162.400, 162.500
Highlands	012055	Sebring	162.500
Manatee	012081	Riverview, Venice, Largo	162.550, 162.400, 162.450
Sarasota	012115	Venice	162.400

The information within this guide should be used as reference only and is subject to change without notice. Always check with local Emergency Management Services, tune to ABC 7 and visit MySuncoast.com for updated information during severe weather events.



MySuncoast.com



Creating a Family Hurricane Readiness Plan

A hurricane on the way can be frightening for everyone, especially children and teenagers. Going over your emergency plan now can help ease some of their fears, and give everyone the confidence that he/she will know what to do in the event of a storm.

Quick Tips

- Have a family meeting about the weather conditions. Explain why you'll need to stay safe at home or evacuate as the storm nears.
- Locate and agree on a safe room (or safe areas) in your home. Move pillows, flashlights, batteries, food and other hurricane supplies to that area.
- Gather necessary medicines, glasses/contact lenses, a first aid kit, and items for children such as baby formula and diapers. Keep them handy.
- Come up with an escape route from your house.
- Decide on a rendezvous point where everyone can meet in case you're separated during the storm.
- Write out contact information for family members. Include work and school, meeting locations and emergency services.
- Decide on a family contact who lives out of town or out of state, so all family members have a single point of contact in case of emergency. Make sure everyone knows this person and his/her phone number.
- The Department's Emergency Contact Information (ECI) program allows Floridians to securely register contact information online at <https://services.flhsmv.gov/eci/> and in driver license offices. DHSMV Executive Director Terry Rhodes says the information can only be accessed by law enforcement in times of emergency. There is no fee to register.
- Make sure a young child knows his/her name, address and home phone number.
- Post emergency phone numbers near your phone and explain when and how to call 911.
- Decide what to do with your pets if you need to evacuate. Make a plan for your pets - don't leave them behind.
- If there's a chance you'll evacuate, pack in advance, and allow children to pack one special item for comfort, such as a stuffed animal.



Important Documents

Before a storm threatens, you should create a file with copies of all the documents you'll need after the storm. Be sure to keep this important information with you during a hurricane, especially if you're forced to evacuate. Personal identification (driver's license or photo identification card) and copies of the following:

- Birth certificate
- Marriage certificate
- Social Security cards
- Passports
- Wills
- Deeds
- Inventory of household goods
- Proof of Home and Car insurance policies
- Immunization records
- Bank and credit card account numbers
- Stocks and bonds
- Emergency contact list and phone numbers
- Map of the area and phone numbers of places you could go

Source: FEMA

Stay up to date with the latest forecasts and severe weather updates from The Official Suncoast Storm Team at ABC 7.



Follow us on Twitter
[Twitter.com/MySuncoastWX](https://twitter.com/MySuncoastWX)



Like us on Facebook
[Facebook.com/MySuncoast.com.ABC7](https://facebook.com/MySuncoast.com.ABC7)



2017



Hurricane Survival Kit

Whether you stay or go, you should still put together a hurricane survival kit long before a storm ever threatens. If you're caught in the path of a hurricane, these are the basic items to get you through the first few days after the storm passes. Even if you plan to evacuate, most of these items can travel with you.

Stock up on supplies!

- ☐ First Aid Kit
- ☐ Flashlight
- ☐ Batteries
- ☐ Battery operated radio
- ☐ Prescription medications
- ☐ Blankets & Pillows (one per person)
- ☐ Weather proof matches
- ☐ Plastic trash bags
- ☐ 1 gallon of water per person/pet per day (5 day supply) and/or a personal water filtration system
- ☐ Chlorinated bleach
- ☐ Basic tool kit including a hammer, nails, screwdriver, shovel and a saw
- ☐ Wet wipes/baby wipes/toilet paper
- ☐ Mosquito repellant
- ☐ Manual can opener
- ☐ Paper plates & plastic utensils
- ☐ Non-perishable packaged or canned food & juices (5 day supply per person)
- ☐ Cooking tools, charcoal and lighter fluid
- ☐ An extra change of clothes, including sturdy shoes and a jacket
- ☐ Fully charged cell phone
- ☐ Cash
- ☐ Toys to entertain your children
- ☐ Books & magazines to pass the time
- ☐ Copies of important documents
- ☐ Vehicles fueled with a full tank

Hurricane Definitions

EYE The low-pressure center of a hurricane. Winds are normally calm and sometimes the sky clears.

EYE WALL The ring of thunderstorms that surrounds a storm's eye. The heaviest rain, strongest winds and worst turbulence are normally in the eye wall.

HURRICANE A tropical cyclone with winds of 74 mph or more. Normally applied to such storms in the Atlantic Basin and the Pacific Ocean east of the International Date Line.

TROPICAL STORM Maximum sustained winds are from 34 to 63 knots (39 to 73 mph). The storm is named once it reaches tropical storm strength.

TROPICAL DEPRESSION Has evidence of closed wind circulation around a center with sustained winds from 20 to 33 knots (23 to 38 mph).

TROPICAL WAVE A kink or bend in the normally straight flow of surface air in the tropics which forms a low pressure trough, or pressure boundary. These waves cause showers and thunderstorms and can develop into a hurricane.

WATCH A hurricane watch means a hurricane is possible in your area, generally within 48 hours. Stay tuned to ABC 7 for updated information. Hurricanes can change direction and speed, and they can gain strength very quickly. It's important to keep listening for updated information several times a day.

WARNING A warning means sustained winds of 64 knots (74 mph) or higher associated with a hurricane are expected in a specified coastal area in 36 hours or less. A hurricane warning can remain in effect when dangerously high water or a combination of dangerously high water and exceptionally high waves continues, even though winds may be less than hurricane force. If you are told to move to a shelter or evacuate the area, do so immediately.



Making Your Home Storm Ready



Long before hurricane season begins, there are things you should do to get your home ready for the storm season

- Keep your trees trimmed, removing all overgrowth and dead branches.
- Make or buy shutters for all your doors and windows NOW, not in the days before a hurricane threatens the Suncoast.
- Impact-resistant windows and manufactured shutters are the preferred ways to protect your home.
- If pre-made shutters aren't an option, use plywood that's at least 3/4 of an inch thick.
- If you own a concrete block home, install anchoring devices for the roof.
- Don't forget about your garage door. This can be the most vulnerable area of your home when a hurricane hits. If possible, work with a professional garage door installer to retrofit your door to meet current hurricane codes. Most home supply stores sell garage door bracing kits.
- Buy plastic tarps that you can use after the storm if you have roof damage.
- Stock up on batteries for radios, flashlights and portable lights.
- Keep in mind, many stores will sell out of the materials you need to protect your home when the area is under a hurricane watch or warning. Everything you can do BEFORE the storm will give you more time to get ready and more peace of mind.
- Have flashlights and battery powered lights ready.
- Make sure the storm has passed before you go outside and it's not the eye of the hurricane.
- Remember that many injuries happen AFTER the storm during the clean up process.

Here's what you need to know to protect your home in the few days or hours before a hurricane strikes

- Pick up everything around your home that could become airborne and bring it inside. That includes all outdoor furniture, potted plants, yard tools, garbage cans, etc.
- Clear your home's gutters to handle the heavy rain.
- Protect your insurance and other important documents in sealable, plastic bags.
- Charge your cell phone batteries.
- Fill up your car with gas and portable gas cans if you own a generator.

What you need to do if you plan to stay at your home through the storm

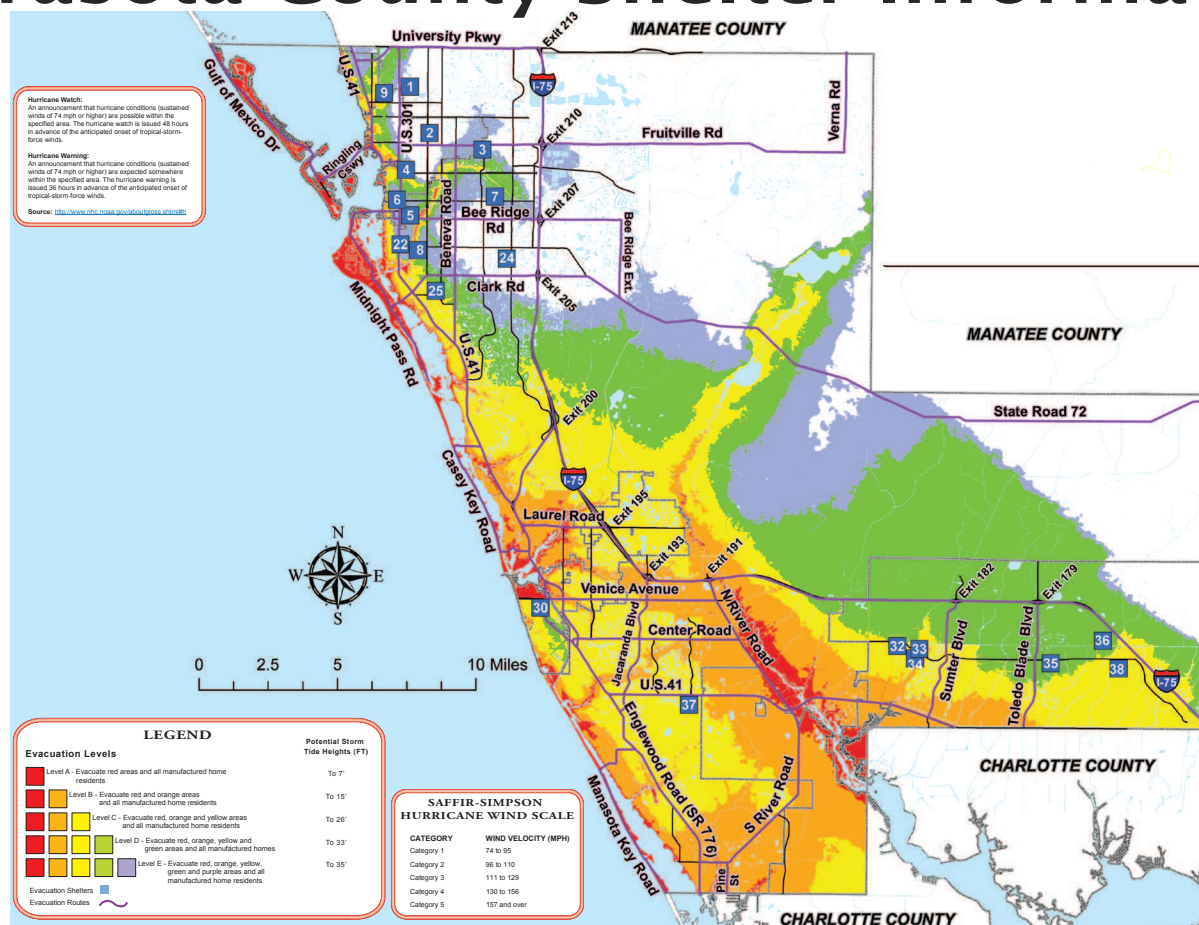
- Stock up on water, non-perishable food, prescriptions, first aid kit, and cash. Basically anything and everything you'll need to survive in the days after the storm when electricity will be out and finding supplies will be a challenge.
- Choose an interior room in your home that can serve as your safe room.
- Have a battery powered radio.
- Have flashlights and battery powered lights ready.
- Make sure the storm has passed before you go outside and it's not the eye of the hurricane.
- Remember that many injuries happen AFTER the storm during the clean up process.

The Bottom Line

- After the storm can be the most stressful part of a hurricane.
- Be safe, be patient and help your neighbors.
- When a hurricane threatens, hope for the best and prepare for the worst!

Sources: National Hurricane Center, Federal Alliance For Safe Homes

Sarasota County Shelter Information



No.	Shelter Name	Pets	Address
1	Booker Middle	No	2250 Myrtle St., Sarasota
2	Tuttle Elem.	No	2863 8th St., Sarasota
3	Bishop Nevins Academy	No	4380 Fruitville Rd., Sarasota
4	Sarasota High	No	1000 S School Ave., Sarasota
5	Brookside Middle	Yes	3636 S Shade Ave., Sarasota
6	Southside Elem.	No	1901 Webber St., Sarasota
7	Brentwood Elem.	No	2500 Vinson Ave., Sarasota
8	Riverview High	Yes	1 Ram Way, Sarasota
9	Booker High	No	3201 N Orange Ave., Sarasota
22	Phillippi Shores Elem.	No	4747 S Tamiami Trl., Sarasota
24	Ashton Elem.	No	5110 Ashton Rd., Sarasota

No.	Shelter Name	Pets	Address
25	Gulf Gate Elem.	No	6500 S Lockwood Ridge., Sarasota
30	Venice Comm. Center	No	326 Nokomis Ave S., Venice
32	Glenallen Elem.	No	7050 Glenallen Blvd., North Port
33	North Port High	Yes	6400 West Price Blvd., North Port
34	Heron Creek Middle	Yes	6501 West Price Blvd., North Port
35	Toledo Blade Elem.	No	1201 Geranium Ave., North Port
36	Woodland Middle	Yes	2700 Panacea Blvd., North Port
37	Taylor Ranch Elem.	No	2500 Taylor Ranch Trl., Venice
38	Atwater Elem.	No	4701 Huntsville Ave., North Port

SCGov.net

(Emergency Services)

<https://goo.gl/dM3oqA>



SCGov.net

(Know Your Evac. Zone)

<https://goo.gl/zIEYgL>



FloridaDisaster.org

(Public Mapping)

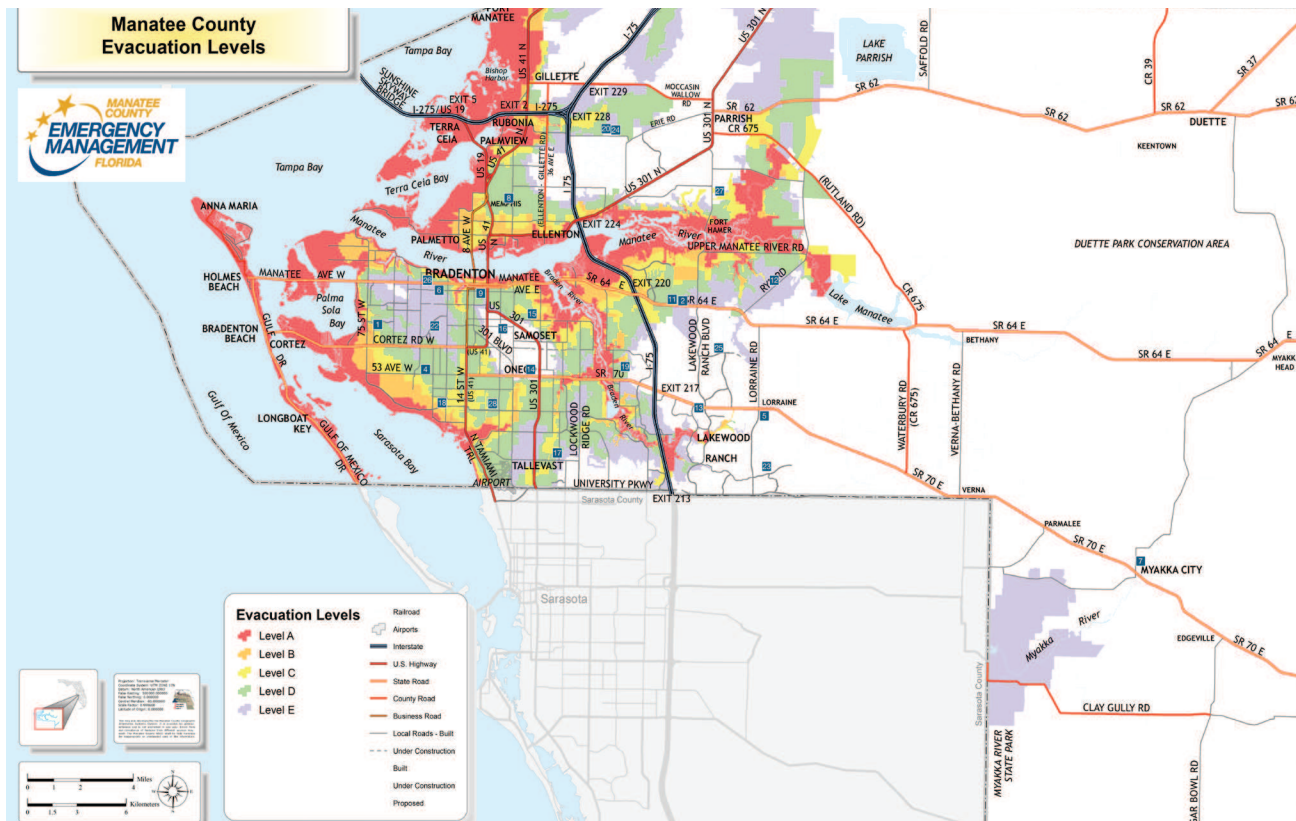
<http://goo.gl/Rp1Wwp>



The information within this guide should be used as reference only and is subject to change without notice. Always check with local Emergency Management Services, tune to ABC 7 and visit MySuncoast.com for updated information during severe weather events.

MySuncoast.com

Manatee County Shelter Information



No.	Shelter Name	Pets	Address
18	Bayshore Elementary School	No	6120 26th Street West, Bradenton
13	Braden River Middle School	No	6215 River Club Blvd., Bradenton
9	Rogers Garden Elem. School	No	515 13th Street East, Bradenton
24	Buffalo Creek Middle School	No	7320 69th Street East, Palmetto
28	Freedom Elementary School	No	9515 State Road 64 East, Bradenton
25	Gullett Elementary School	No	12125 44th Avenue East, Bradenton
11	Haile Middle School	No	9501 State Road 64 East, Bradenton
15	Johnson Middle School	No	2121 26th Avenue East, Bradenton
17	Kinnan Elementary School	No	3415 Tallevast Road, Sarasota
4	Lee Middle School	No	4000 53rd Avenue West, Bradenton
6	Manatee High School	Yes	1000 32nd Street West, Bradenton
19	Braden River High School	Yes	6215 State Road 70 E., Bradenton
5	McNeal Elementary School	No	6325 Lorraine Road, Bradenton

No.	Shelter Name	Pets	Address
26	Miller Elementary School	No	4201 Manatee Avenue West, Bradenton
20	Mills Elementary School	Yes	7200 69th Street East, Palmetto
7	Myakka City Elem. School	No	37205 Manatee Ave., Myakka City
14	Oneco Elementary School	No	5214 22nd Street Court East, Bradenton
22	Prine Elementary School	No	3801 Southern Parkway, Bradenton
16	Rowlett Elementary School	No	3500 9th Street East, Bradenton
1	Seabreeze Elementary School	No	3601 71st Street West, Bradenton
8	Tillman Elementary School	No	1415 29th Street East, Palmetto
27	Williams Elementary School	No	3404 Fort Hamer Road, Parrish
23	Willis Elementary School	No	14705 The Masters Avenue, Bradenton
12	Witt Elementary School	No	200 Rye Road, Bradenton
28	Daughtrey Elementary School	No	515 63rd Avenue East, Bradenton

MyManatee.org
(Emergency Management)
<http://goo.gl/GpCuNh>



MyManatee.org
(Know Your Evac. Zone)
<http://goo.gl/r3vq3B>

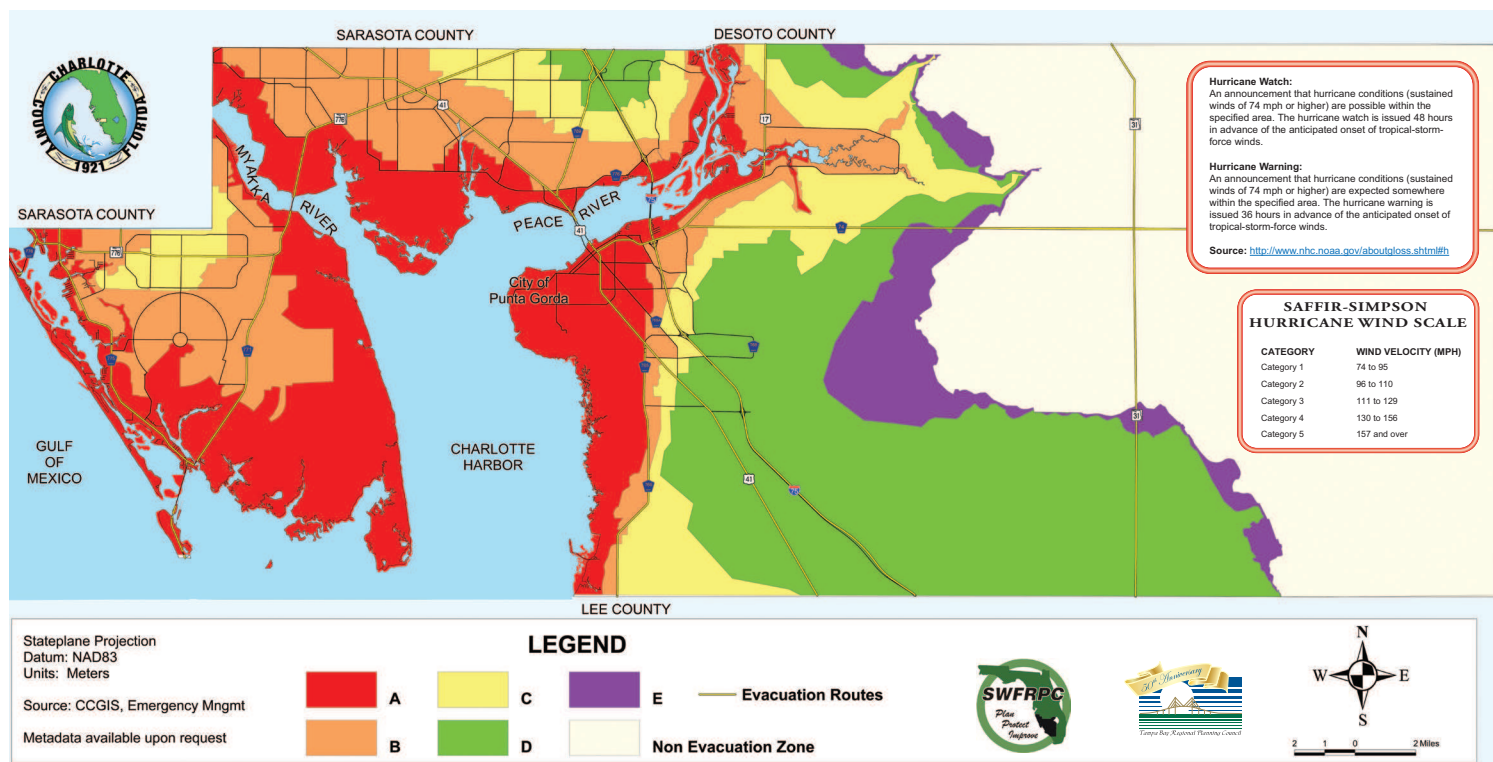


FloridaDisaster.org
(Public Mapping)
<http://goo.gl/Rp1Wwp>



The information within this guide should be used as reference only and is subject to change without notice. Always check with local Emergency Management Services, tune to ABC 7 and visit MySuncoast.com for updated information during severe weather events.

Charlotte County Shelter Information



Charlotte Harbor School	22450 Hancock Ave, Port Charlotte	Murdock Middle School	17325 Mariner Way, Port Charlotte
Cultural Center of Charlotte Co.	2280 Aaron St., Port Charlotte	Myakka River Elementary School	12650 Wilmington Blvd, Englewood
Kingsway Elementary School	23300 Quasar Blvd., Port Charlotte	Port Charlotte High School	18200 Cochran Blvd, Port Charlotte
L.A. Ainger Middle School	245 Cougar Way, Rotonda West	Port Charlotte Middle School	23000 Midway Blvd, Port Charlotte
Lemon Bay High School	2201 Placida Rd, Englewood	Sallie Jones Elementary School	1230 Narranja St., Punta Gorda
Liberty Elementary School	370 Atwater Street, Port Charlotte	South County Regional Park	670 Cooper Street, Punta Gorda
Meadow Park Elementary School	3131 Lakeview Blvd. NW, Port Charlotte	Vineland Elementary School	467 Boundary Blvd, Englewood

NOTE

Only Kingsway Elementary School is a Red Cross Shelter. The remaining facilities will be opened as County run shelters. Do not depend on a particular Refuge Site being open. Refuge Sites may or may not be opened depending on the size of the storm and the predicted landfall area. Charlotte County has no Refuge Sites if we have a Category 3 or higher storm affecting the area.

CharlotteCountyFL.com
(Emergency Management)

<http://goo.gl/RqvxBB>



CharlotteCountyFL.com
(Know Your Evac. Zone)

<http://goo.gl/275nRE>



FloridaDisaster.org
(Public Mapping)

<http://goo.gl/Rp1Wwp>



The information within this guide should be used as reference only and is subject to change without notice. Always check with local Emergency Management Services, tune to ABC 7 and visit MySuncoast.com for updated information during severe weather events.

MySuncoast.com

Other Suncoast Shelter Locations

Hardee County Shelter Information

Zolfo Springs Elementary School	3215 Schoolhouse Rd., Zolfo Springs	(863) 735-1221
Bowling Green Elementary School	4530 Church Ave., Bowling Green	(863) 375-2288
Hilltop Elementary School	2401 US Highway 17 N., Wauchula	(863) 773-2750
Wauchula Elementary School	400 S. Florida Ave., Wauchula	(863) 773-3141
North Wauchula Elementary School	1120 North Florida Ave., Wauchula	(863) 773-2183
South Florida Community College	2968 US Highway 17 N. Bowling Green	SPECIAL NEEDS ONLY 863-773-3081
Wauchula Elementary School	400 South Florida Avenue	(863) 773-3141

HardeeCounty.net
(Shelter Information)
<http://goo.gl/Aod9k5>



Desoto County Shelter Information

Desoto County Middle School	420 East Gibson Street, Arcadia	(863) 993-4831
South Florida Community College	2251 NE Turner Avenue, Arcadia	Special Needs Shelter (Must be pre-registered)

DesotoBOCC.com
(Emergency Management)
<http://goo.gl/Dh51Cg>



Information About Special Needs Shelters

Each county handles special needs shelters in different ways. Almost all of them require that you register in advance. For your own protection and peace of mind, register now before a storm threatens. You can download the applications online or call the county where you live.

Manatee County	www.mymanatee.org	941-749-3500
Sarasota County	www.scgov.net	941-861-5000
Charlotte County	www.charlottecountyfl.com	941-833-4000
Hardee County	www.hardeecounty.net	863-773-6373
Desoto County	www.desotobocc.com	863-993-4831

Safety Comes First

We enjoy beautiful weather most of the time here on the Suncoast, but we also have to deal with severe weather. That can mean hurricanes, tornadoes, flooding or marine warnings. You are our eyes on the scene, and we count on you to help capture the weather stories and images that happen in your neighborhood. We want to emphasize that **SAFETY COMES FIRST**, so **NEVER PUT YOURSELF IN HARM'S WAY**. Be careful, be safe, but keep those cell phones handy during severe weather!

Send us your photos!

Pix@mysuncoast.com



Photos courtesy of Jeremy DeWitt

2017 Hurricane Names



Arlene
Bret
Cindy
Don
Emily
Franklin
Gert
Harvey
Irma
Jose
Katia
Lee
Maria
Nate
Ophelia
Philippe
Rina
Sean
Tammy
Vince
Whitney

Saffir-Simpson Hurricane Scale by category

5 <i>Catastrophic Damage</i>	4 <i>Catastrophic Damage</i>	3 <i>Devastating</i>	2 <i>Extremely Dangerous</i>	1 <i>Very Dangerous</i>
157 or higher wind	130-156 mph wind	111-129 mph wind	96-110 mph wind	74-95 mph wind
The potential for complete building and roof damage/failure. Some small buildings could be blown over entirely. Massive evacuation of residential areas on low ground within 5 to 10 miles of the shoreline may be required.	Some roofing material, door and window damage to buildings. Considerable damage to vegetation, mobile homes and piers. Coastal and low-lying escape routes flood 2-4 hours before arrival of center.	Some structural damage to small residences and utility buildings. Mobile homes are destroyed. Flooding near the coast destroys smaller structures. Flooding can occur inland 8 miles or more. Power out for several days.	More extensive structural damage, and the potential for roof failure on small residences. Major erosion of beach. Severe flooding may require massive evacuation of residential areas inland as far as 8 miles.	The potential for complete building and roof damage/failure. Some small buildings could be blown over entirely. Massive evacuation of residential areas on low ground within 5 to 10 miles of the shoreline may be required.



The information within this guide should be used as reference only and is subject to change without notice. Always check with local Emergency Management Services, tune to ABC 7 and visit MySuncoast.com for updated information during severe weather events.

What To Bring To A Shelter

Now, before a hurricane threatens, is the time to pack your bag to take with you to the shelter. Keep in mind that there are no beds, few chairs, and no entertainment at shelters and you may spend a few hours or several days cooped up there. There is very little privacy at the shelters. You'll spend your time in a big room in close proximity to a lot of other people. Volunteers at the shelters supply food and a safe, dry place out of the storm. It's up to you to bring the rest.



Here's what to bring to the shelter

- Medication
- Sleeping bag, inflatable mattress, pillow, and a blanket to keep warm
- Something to sit on, like a folding chair
- Books, games, radio, cell phone, toys for kids
- Batteries for all battery operated items
- Wash cloth, towels and a few changes of clothes
- Toothbrush and toothpaste
- Snacks
- Flash lights

And be sure to let friends and family, especially those out of town, know what shelter you're going to so they can find you after the storm passes.



Boat Safety Tips

Whether you store your boat in your backyard or have it docked on the water, there are some simple things you should do before a hurricane hits:



- Remove small boats from the water and move them to a secure location; the more inland the better.
- Be sure your trailer and boat are secured above the likely flood areas.
- Remove all loose items on board.
- Tie the boat securely to the trailer or tie it to trees. It doesn't hurt to throw out the anchor.
- Let some air out of the trailer tires and block the wheels.
- You can increase the weight of lighter outboard boats by leaving the drain plug in and using a garden hose to add water. This has the added advantage of giving you emergency.
- Water (non-drinking) if the hurricane knocks out the main water supply.
- Place wood blocks between the trailer's frame and axle to support the added weight.
- In some cases you may want to plug the engine's exhaust outlet.
- If possible, boats on storage racks should be placed on trailers and taken home.
- If your boat is too large to take out of the water, move it to a safe haven well before the storm approaches. You should know where safe havens are in the area where you boat.
- Double up and secure mooring lines.
- By the time preparations are completed, your boat should resemble a spider suspended in the center of a large web.
- Secure all hatches and portals and cover windscreens.
- Take down mast whenever possible.
- It's best to not leave your boat on a davit. If you must, be sure to remove the drain plug to avoid excess water weight. A study by MIT after hurricane Gloria found that boats stored ashore were more likely to be saved than boats that were kept in the water. Members of the Boat U.S. Catastrophe team estimated that as many as 50% of the boats damaged during Hurricane Fran could have been saved by using better dock lines.

Sources: US Coast Guard & BoatUS.com

What To Do With Pets?

In order to bring your pet to a pet friendly shelter you will need to provide proof of an updated license, vaccinations and have your pet in a pet carrier. Pet friendly shelters are usually limited to dogs and cats only.



As pet owners, we have several responsible choices when a hurricane threatens:

1. Keep them with us at home.
2. Take them with us to a pet-friendly motel or public shelter.
3. Board them in a hurricane safe kennel.
4. Take them on a road trip to an out of town friend or family's home.

If you decide to stay, designate a safe room where pets can go. Preferably one with solid walls and without windows. You'll need a preparedness kit for each pet.

FEMA's Recommendation For Pet Preparedness

(in addition to proof of updated vaccinations)

- A leash with collar and ID
- An animal crate
- Two week supply of food, water and any medications.
- Towels to dry them off after a walk in the rain.
- If you have a cat, be sure to bring kitty litter and an appropriate container.
- Check around NOW for kennels that are hurricane safe (located inland, away from storm surge, with an independent power source). It might be smart to register with them ahead of time providing the latest vaccination and medical information.
- During the early signs of an approaching storm, make your reservations early because the kennels will fill up fast. The same goes for finding motels that are pet-friendly.

Sarasota Pet Friendly Shelters

www.scgov.net

Heron Creek Middle School	6501 W Price Blvd., North Port
Brookside Middle School	3636 S Shade Ave., Sarasota
Pine View School	501 Old Venice Rd., Osprey
North Port High School	6400 W. Price Blvd., North Port
Woodland Middle School	2700 Panacea Blvd., North Port
Riverview High School	1 Ram Way, Sarasota

Manatee Pet Friendly Shelters

www.mymanatee.org

Braden River High School	6545 State Road 70 E., Bradenton
Manatee High School	1000 32nd St. W., Bradenton
Mills Elementary School	7200 69th St. E., Palmetto

Charlotte Pet Friendly Shelters

www.charlottecountyfl.com

Port Charlotte Middle School	23000 Midway Blvd., Port Charlotte
------------------------------	------------------------------------

Hardee Pet Friendly Shelters

www.hardeecounty.com

Pet Friendly Shelter	404 West Orange St., Wauchula
----------------------	-------------------------------

What To Do After The Storm

Emergency information will be forthcoming; follow the directions of local officials. If you have evacuated, do not return home until you have been notified that the neighborhood is safe.

- **Have I.D. with you at all times.**
- Your family's health and safety is a primary concern. Drink plenty of clean water to avoid dehydration. To purify water, boil it for ten minutes or add 8 drops of bleach per gallon of clear water. Discard food that has been in contact with floodwaters.
- Wash hands frequently as floodwaters may contain contaminants.
- Apply first aid to any cuts and seek professional assistance for the injured.
- Use the telephone only for emergencies and to call your insurance agent.
- Mark your address on your home so that it is clearly visible from the street. Also mark the name of your insurance company.
- Do not go sightseeing, particularly at night.
- Make temporary repairs to your roof with tarpaulins as soon as possible to limit further water damage to the inside of your home.
- Document all damage with a camera.
- Beware of hazards such as gas leaks, downed power lines, stray animals, damaged home wiring, broken glass, chemical spills and weakened trees.
- Wear sturdy shoes and use gloves for clean ups.
- Do not use candles for light. Battery powered lanterns and flashlights are best.
- Follow generator instruction manuals for the safety procedures.
- Check the credentials of anyone hired to assist in repairs to your home. Get estimates and guarantees in writing and be sure the contractor is licensed and insured.
- Understand that disaster can cause an emotional toll on family members. Accept assistance from faith-based organizations, voluntary agencies or professional counselors for anyone showing signs of profound sadness, grief or anger.





Important Telephone Numbers

EMERGENCY MANAGEMENT

Sarasota County	941-861-5000	scgov.net
Manatee County	941-749-3500	mymanatee.org
Charlotte County	941-833-4000	charlottecountyfl.com
DeSoto County	863-993-4831	www.co.desoto.fl.us
Hardee County	863-773-6373	hardeecounty.net

SARASOTA COUNTY

Sheriff	941-861-5800
Animal Services	941-861-9500
Highway Patrol	941-483-5911
American Red Cross	941-379-9300
Special Needs	941-861-5000
FPL	1-800-468-8243
Solid Waste	941-861-5000
Friendship Volunteer Center	941-953-5965

MANATEE COUNTY

Sheriff	941-747-3011
Animal Services	941-742-5933
Highway Patrol	941-751-7647
American Red Cross	941-792-8686
Peace River Electric	1-800-282-3824
FPL	1-800-468-8243
Solid Waste	941-792-8811
Citizens Action Ctr.	941-742-3500
Special Needs	941-749-3500, ext. 7828

CHARLOTTE COUNTY

Sheriff	941-639-2101
Animal Services	941-833-5690
Highway Patrol	239-278-7100
American Red Cross	941-629-4345
Emergency Management	941-833-4000

HARDEE COUNTY

Sheriff	863-773-0304
Animal Services	863-773-2320
American Red Cross	863-773-9097
Utilities	863-773-3465
Fire Rescue	863-773-4362
Peace River Electric	1-800-282-3824
Progress Energy	1-800-228-8485
Special Needs	863-773-6373

DESOTO COUNTY

Sheriff	863-993-4700
Animal Services	863-993-4855
American Red Cross	863-494-2348
Highway Patrol	239-938-1800
FPL	1-800-468-8243
Peace River Electric	1-800-282-3824

STATE OF FLORIDA

FEMA	1-800-621-3362
FEMA-Hearing Impaired TDD	1-800-427-5593
American Red Cross Helpline	1-800-733-2767
Salvation Army Emergency Needs	1-800-725-2769
Fl. Hurricane Financial Help Line	1-800-488-4406
State of FL Emergency Information	1-800-342-3557
Attorney General	myfloridalegal.com

Price Gouging Hotline/Consumer Services	1-800-435-7352 (1-800-HelpFLA)
---	-----------------------------------

Dept. of Labor & Employment	1-800-342-1741
State Volunteer and Donations	1-800-354-3571
Elder Affairs	1-800-963-5337

MAJOR INSURANCE COMPANIES

State Farm Insurance	1-800-732-5246
Allstate Floridian Insurance	1-800-547-8676
Nationwide Insurance	1-800-421-3535
USAA	1-800-531-8222
Citizens Property Insurance	1-866-411-2742
Travelers of Florida	1-800-252-4633
Progressive	1-800-776-4737
Mercury	1-800-987-6000
National Flood Insurance Program	1-800-427-4661



Be Prepared This Hurricane Season



Hurricane season can be a stressful time for Floridians. Meteorologists believe this year's season could see more activity than usual due to El Nino. In fact, some predict that El Nino might trigger La Nina, which is characterized by strong winds in the Atlantic basin.

It's a good idea to stock up now on essential preparedness products before disaster strikes suddenly or you need to evacuate. Batteries Plus Bulbs has a nationwide disaster planning program in place for its stores, ensuring that consumers are able to stock up on preparedness items without fear of their local store running out of products.

Batteries Plus Bulbs has store locations in Bradenton, Ellenton, Sarasota, Port Charlotte and Venice. Visit www.batteriesplus.com to find the store nearest you and get expertise about more essential hurricane preparedness products.



[Click here for tips & gear to weather the storm!](#)

Here are recommend products homeowners and businesses should keep on hand:

- **Power Inverters** – Power inverters will allow you to use a car's battery to run a variety of electronic devices and appliances if you're without electricity.
- **Flashlights** – As a general rule of thumb, consumers should have one flashlight per person in their household.
- **Alkaline Batteries** – Stock up on two to three sets of backup batteries, including AA, AAA, C, D and 9 volt, for every device that requires a charge including flashlights, lanterns, and smoke, fire and carbon monoxide detectors.
- **Battery-Operated Candles** – Battery powered candles are a safe option to provide lighting in the home.
- **UPS Battery Backup** - Keep equipment powered and avoid losing data or damaging your electrical equipment during a power surge or unexpected shutdown.
- **Backup Chargers for Mobile Devices** – A protective case with an external battery pack can help keep a smartphone powered up longer than its normal battery life. Car chargers are crucial for keeping communication lines open when the electricity is out.